



NUMBER: 05-006-13

GROUP: Brakes

DATE: August 23, 2013

This bulletin is supplied as technical information only and is not an authorization for repair. No part of this publication may be reproduced, stored in a retrieval system, or transmitted, in any form or by any means, electronic, mechanical, photocopying, or otherwise, without written permission of Chrysler Group LLC.

THIS SERVICE BULLETIN IS ALSO BEING RELEASED AS RAPID RESPONSE TRANSMITTAL (RRT) 13-061. ALL APPLICABLE SOLD AND UN-SOLD RRT VIN'S HAVE BEEN LOADED. TO VERIFY THAT THIS RRT SERVICE ACTION IS APPLICABLE TO THE VEHICLE, USE VIP OR PERFORM A VIN SEARCH IN TECHCONNECT. ALL REPAIRS ARE REIMBURSABLE WITHIN THE PROVISIONS OF WARRANTY.

SUBJECT:

Incorrect Caliper Adapter Mounting Bolt Length

OVERVIEW:

This bulletin involves inspecting for contact between the rear brake caliper adapter mounting bolts and brake shield and if necessary replacing the bolts.

MODELS:

2013 - 2014	(WK)	Grand Cherokee
2013	(WD)	Durango

NOTE: This bulletin applies to vehicles built on or after June 8, 2013 (MDH 0608XX) and on or before June 11, 2013 (MDH 0611XX).

SYMPTOM/CONDITION:

Caliper adapter mounting bolts are too long and contacting the brake dust shield causing a rattling noise.

DIAGNOSIS:

If a customer's VIN is listed in VIP or your RRT VIN list, perform the repair. For all other customers that describe the symptom/condition, perform the Repair Procedure.

PARTS REQUIRED:

Qty.	Part No.	Description
4	06104235AA	SCREW, Hex Flange Head, M12X1.5X35.00
1 (AR)	NPN	3M™ 08681 Single Step Primer, 125 mL

NOTE: 3M™ 08681 Single Step Primer will service approximately 4 vehicles.

REPAIR PROCEDURE:

1. Hoist vehicle. Refer to the detailed repair procedures available in: DealerConnect> TechCONNECT under: Service Info> 04 - Vehicle Quick Reference> Hoisting> Standard Procedure.
2. Remove both rear wheels.
3. Inspect for interference between the brake caliper adapter mounting bolts (1) and brake dust shield, at location (2) (Fig. 1). Inspect both left and right side of rear axle to determine if bolt contact with dust shield is observed.
 - a. Yes - Proceed with repair.
 - b. No - No further action is required.

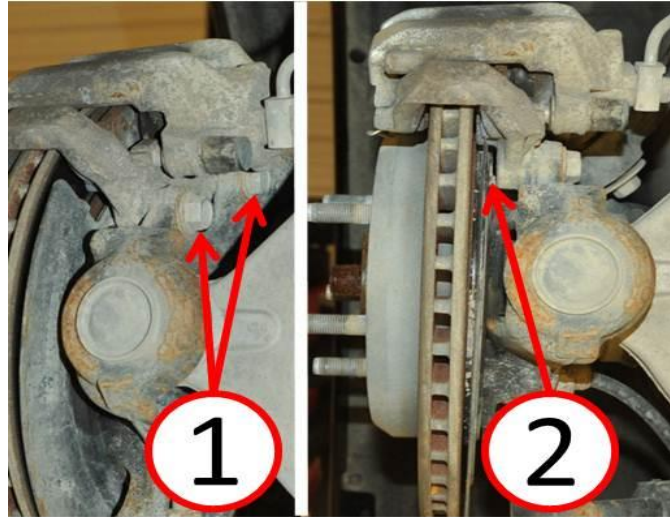


Fig. 1 Bolt Interference Inspection

1 - Caliper adapter Bolts

2 - Interference Location Between Bolts And Dust Shield

-
4. Remove rear brake rotors. Refer to the detailed repair procedures available in: DealerConnect> TechCONNECT under: Service Info> 05 - Brakes, Base> Hydraulic/Mechanical> ROTOR, Brake> Removal.
 5. The dust shield may have been pushed outboard and contacted the brake rotor due to the incorrect length brake caliper adapter bolts. Push firmly on the dust shield in the area directly across from where the brake caliper adapter mounts in order to reposition the dust shield inboard toward the vehicle (Fig. 2).

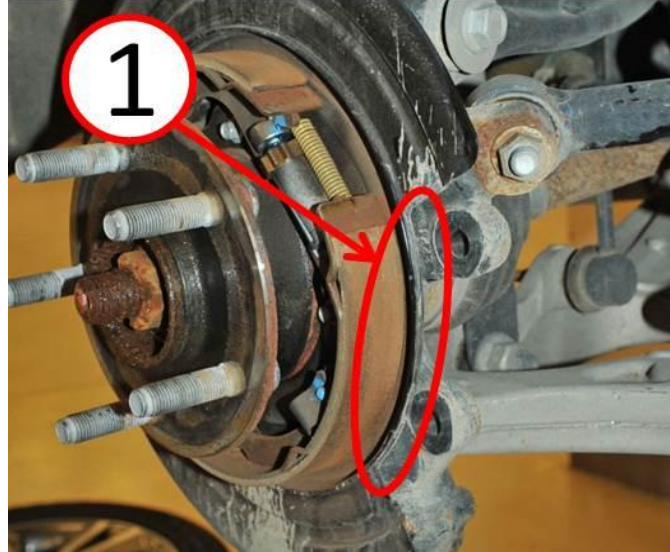


Fig. 2 Dust Shield Affected Area

1 - Dust Shield Affected Area

6. Reinstall the brake rotor onto the wheel studs and verify that there is 1.5mm spacing between the brake rotor face and the dust shield. Repeat previous step if necessary to achieve the proper spacing (Fig. 3)

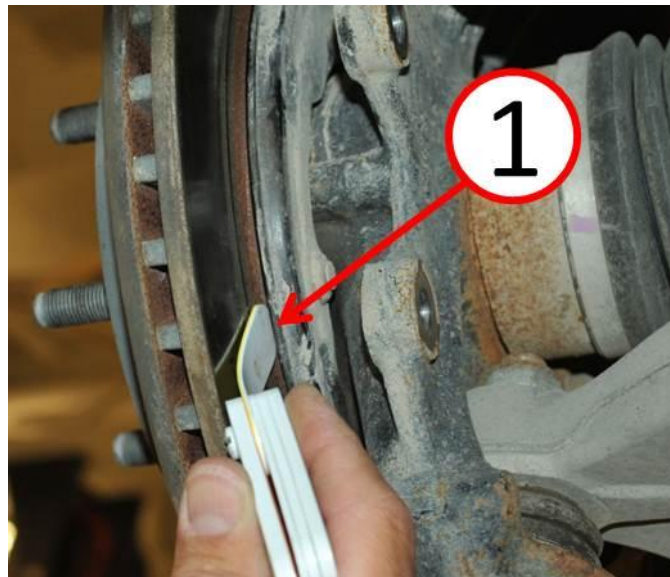


Fig. 3 Clearance Check

1 - Rotor To Dust Shield Spacing

7. Remove the brake rotor and use a brush to apply 3M™ Single Step Primer to the paint affected areas of dust shield where the brake caliper adapter mounting bolts made contact and/or where the dust shield contacted the brake rotor (Fig. 4).

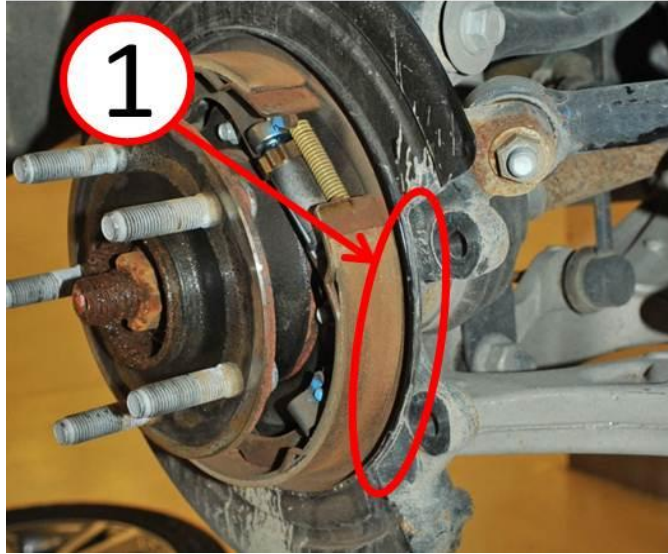


Fig. 4 Dust Shield Affected Area

1 - Dust Shield Affected Area

-
8. Obtain the correct brake caliper adapter mounting bolts (1) and discard the incorrect bolts (2) (Fig. 5).

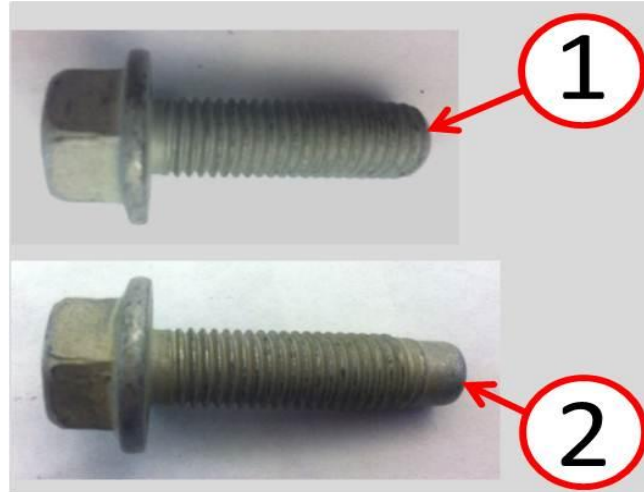


Fig. 5 Bolt Identification

1 - Correct Bolt

2 - Incorrect Bolt

-
- 9. Using the correct brake caliper adapter mounting bolts, install the rear brake rotors and all other previously removed components. Refer to the detailed repair procedures available in: DealerConnect> TechCONNECT under: Service Info> 05 - Brakes, Base> Hydraulic/Mechanical> ROTOR, Brake> Installation.

POLICY:

Reimbursable within the provisions of the warranty.

TIME ALLOWANCE:

Labor Operation No:	Description	Skill Category	Amount
05-85-05-97	Inspect All Four Rear Caliper Adapter Bolts (2 - Skilled)	4 - Chassis	0.2 Hrs.
05-85-05-98	Inspect And Replace All Four Rear Caliper Adapter Bolts (2 - Skilled)	4 - Chassis	0.6 Hrs.

FAILURE CODE:

ZZ	Service Action
----	----------------